

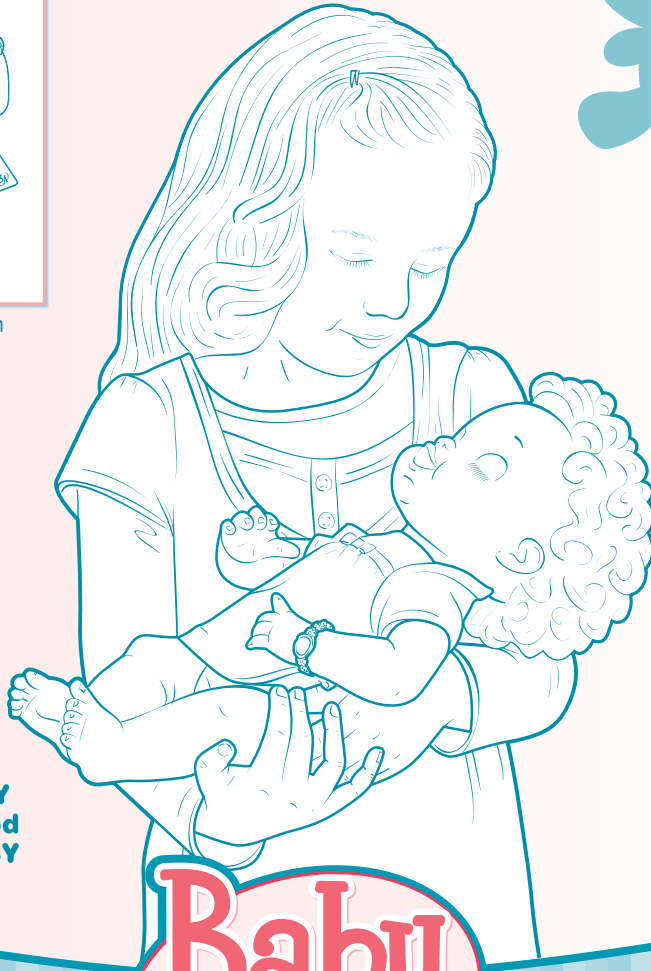
ALSO INCLUDES:




Spoon and bottle contain magnets.



BABY ALIVE doll food is nontoxic and made of food-grade ingredients, but it is **not intended to be eaten**. If accidentally ingested, however, it is not harmful. Use only **BABY ALIVE** doll food with your **BABY ALIVE** doll.



 **x2**
1.5V AA
R6 size
BATTERIES INCLUDED

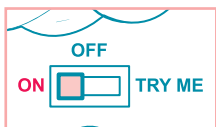
Replace with 2 x 1.5V "AA" or R6 size batteries. Alkaline batteries recommended. Phillips/cross head screwdriver (not included) needed to replace batteries.

Baby Alive®

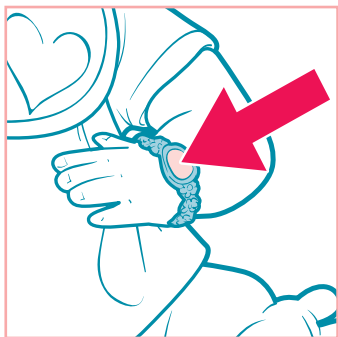
My Baby Alive™

NOTE TO THE CONSUMER: This doll is packaged in "TRY ME" mode. When you bring the doll home, move its ON/OFF/TRY ME switch to the "ON" position.

TO PLAY



First, make sure your doll's ON/OFF/TRY ME switch is set to "ON."



Your **BABY ALIVE** doll acts like a real baby girl! Press the button on your **doll's bracelet** and she'll talk to you!

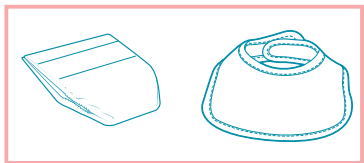
When you feed her with the spoon or give her the bottle, she'll talk and make eating sounds. She really "eats" her doll food and "drinks" from her bottle! After meals, she'll need you to change her diaper!

When it's time for your doll to take a nap, cradle her in your arms or lay her down. She'll close her eyes! Sit her upright to "wake" her up again.

To switch the doll's language to English or Spanish, press and hold the bracelet button until she says a phrase (3–4 seconds). Release button once the doll changes languages.

NOTE: To conserve batteries, move switch to the "OFF" position when doll is not being used.

MEALTIME

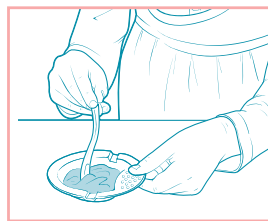


Before you feed your doll, put on her bib and make sure her diaper is securely fastened.

NOTE: Doll food may stain some surfaces; wash promptly upon contact. For best results, feed doll in an environment that's easily wiped clean, and away from surfaces such as carpeting or upholstery.

Preparing your doll's meal:

1. Start by adding water up to the fill line in your doll's bowl (**about 15 ml or 3 teaspoons of water**). You can also measure by filling the bottle with water up to the **first fill line** and pouring it into the bowl.
2. Open a packet of **BABY ALIVE** doll food and pour it into the bowl with measured-out water.
3. Mix the doll food and water together. Doll food will thicken as it's stirred.
4. Fill your doll's bottle with water for her to sip between spoonfuls of doll food.



Feeding your doll:

TIPS: Just like a real baby, your doll can be messy when she eats! She's easier to feed when you tilt her head back (as shown).

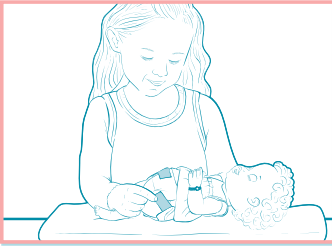
1. Be sure to feed your doll right after you've mixed up her food.
2. Use the included spoon to feed your doll small amounts of doll food.
3. After every few spoonfuls of doll food, give your doll a drink by pressing the bottle into her mouth. Gently squeeze the bottle to release water, giving her a few sips at a time.



IMPORTANT MEALTIME GUIDELINES

- Use only **BABY ALIVE** doll food and doll juice mixes (sold separately); **never** feed her real food.
- Always give your doll a bottle of water after she eats, or doll food may become stuck inside. Use only clean tap water; do not use any other liquids.
- **Do not feed doll more than one packet of doll food and one bottle of water between diaper changes.**
- If doll food becomes too thick, add a teaspoonful of water and stir well.
- Doll food cannot be stored; use immediately after mixing.
- Only the included spoon and bottle will work with your **BABY ALIVE** doll. Food and diaper refills are sold separately.
- Do not place any foreign objects in doll's mouth or any other opening.

DIAPER TIME



After feeding your doll, you'll need to change her diaper!

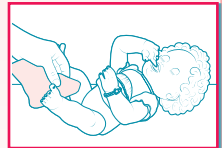
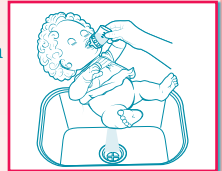
To change diaper:

1. Remove diaper and wipe doll clean with a soft, damp cloth or paper towel.
2. Put on a new diaper and fasten securely.
 - **ALWAYS** change your doll's diaper and clean her after she drinks.
 - **NEVER** let your doll sit with a wet diaper.
 - Discard dirty diapers; they cannot be washed or reused.

IMPORTANT CLEANING INSTRUCTIONS

To prevent clogging, it is essential to rinse doll clean immediately after each use. If food is left in the doll, it can harden and become difficult to clean.

- To clean doll after feeding, give the doll several bottles of water until any remaining food has been rinsed away and the water runs clear (it's best to do this over a sink). Tilt bottle from side to side to make sure you've rinsed away any food build-up in the corners of the doll's mouth. Use a soft cloth or paper towel to wipe away any remaining food. Allow doll to dry.
- **STAIN ADVISEMENT:** **BABY ALIVE** doll food may stain some surfaces. Adult supervision recommended. If spilled, wash with soap and water.
- Clean doll's body by wiping gently with a soft, damp cloth. **Do not rub.**
- Do not submerge doll in water; it is not intended for bath-time play.
- Do not wash doll's hair; if any doll food gets into hair, wipe away with a soft, damp cloth.
- Doll's clothes are machine-washable (mild detergent, cold water, gentle cycle); they can also be spot-cleaned with a cool damp cloth; hang to dry. Doll bib should be cleaned with a soft, damp cloth; hang to dry.
- Hand-wash spoon, bowl and bottle with mild dish soap and water; they are **not** dishwasher-safe.

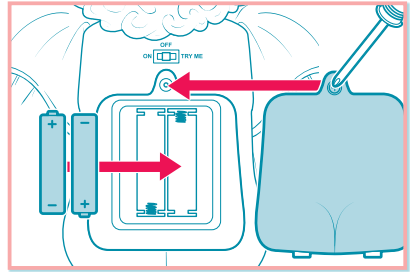


TROUBLESHOOTING

If doll is unresponsive, or if sounds become erratic, the battery power may be low. Replace batteries.

TO REPLACE BATTERIES

1. Locate battery compartment on doll's back.
2. Loosen screw on battery door.
3. Remove and properly discard old batteries.
4. Replace with fresh 2 x 1.5V "AA" or R6 size batteries.
5. Replace door and tighten screw (make sure ribbon is clear of seal).



IMPORTANT: BATTERY INFORMATION

⚠ CAUTION:

1. Always follow the instructions carefully. Use only batteries specified and be sure to insert them correctly by matching the + and - polarity markings.
2. Do not mix old batteries and new batteries or standard (carbon-zinc) with alkaline batteries.
3. Remove exhausted or dead batteries from the product.
4. Remove batteries if product is not to be played with for a long time.
5. Do not short-circuit the supply terminals.
6. Should this product cause, or be affected by, local electrical interference, move it away from other electrical equipment. Reset (switching off and back on again or removing and re-inserting batteries) if necessary.
7. **RECHARGEABLE BATTERIES:** Do not mix these with any other types of batteries. Always remove from the product before recharging. Recharge batteries under adult supervision. **DO NOT RECHARGE OTHER TYPES OF BATTERIES.**

FCC STATEMENT

This device complies with part 15 of the FCC Rules. Operation is subject to the following two conditions: (1) This device may not cause harmful interference, and (2) this device must accept any interference received, including interference that may cause undesired operation.

This equipment has been tested and found to comply with the limits for a Class B digital device, pursuant to part 15 of the FCC Rules. These limits are designed to provide reasonable protection against harmful interference in a residential installation. This equipment generates, uses and can radiate radio frequency energy, and, if not installed and used in accordance with the instructions, may cause harmful interference to radio communications. However, there is no guarantee that interference will not occur in a particular installation. If this equipment does cause harmful interference to radio or television reception, which can be determined by turning the equipment off and on, the user is encouraged to try to correct the interference by one or more of the following measures:

- Reorient or relocate the receiving antenna.
- Increase the separation between the equipment and receiver.
- Consult the dealer or an experienced radio/TV technician for help.

CAUTION: Changes or modifications to this unit not expressly approved by the party responsible for compliance could void the user's authority to operate the equipment.



 NOTE TO UK CONSUMERS: This product and its batteries must be disposed of separately at your local waste recycling centre. Do not dispose of in your household waste bin.

© 2010 Hasbro. All Rights Reserved.

TM & ® denote U.S. Trademarks.

29742

PN 7134320000

Product and colors may vary.



Questions? Call 1-800-327-8264